

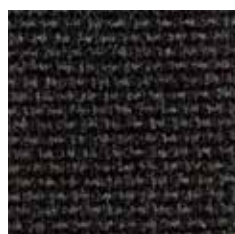
# **Tessuti ufficio 2022**

# RIVESTIMENTI - UPHOLSTERIES

## CAT. 2 - CAGLI IGNIFUGO



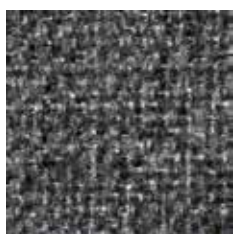
Tessuto / fabric - Ignifugo/fireproof 1 IM Class - Composizione: 100% PL  
Peso 380 g/m<sup>2</sup> - Resistenza all'abrasione >25.000 cicli (test martindale) - test: 1 IM, BS5852, CRIB5



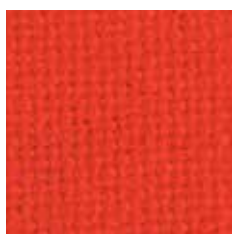
208 Nero



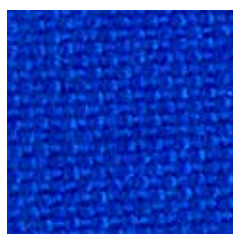
218 Grigio chiaro



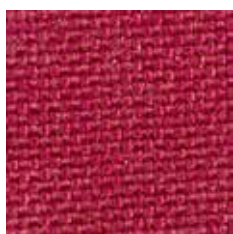
224 Grigio scuro



226 Rosso



230 Blu



242 Bordeaux

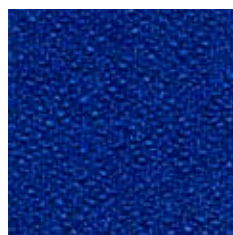
## CAT. 3



BOND tessuto / fabric - Ignifugo/fireproof 1 IM Class - Composizione: 100% PL - Peso/weight 250 g/m<sup>2</sup>  
resistenza all'abrasione >150.00 cicli (test Martindale) - test: 1 IM, EN1021, BS7176, CRIB5



300 Nero



301 Blu



302 Arancio



303 Verde chiaro



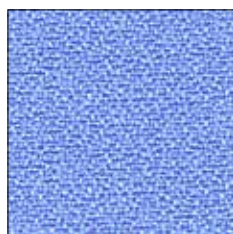
304 Verde scuro



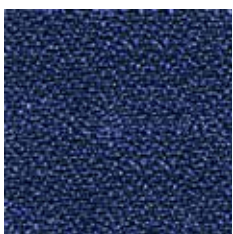
305 Beige



306 Rosso



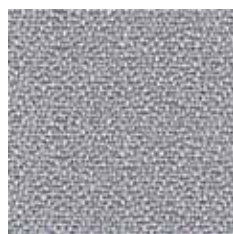
307 Azzurro



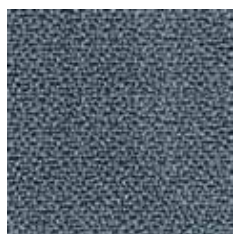
308 Blu scuro



309 Verde



310 Grigio chiaro



311 Grigio scuro



312 Tortora



313 Marrone



314 Ocra



315 Pesca



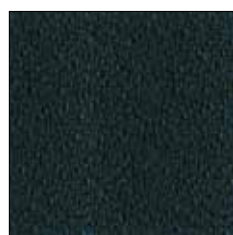
316 Bordeaux



317 Viola



318 Denim



319 Petrolio



340 Navy



341 Oliva



342 Lime



343 Arancio



## CAT. 3 ECOPELLE

Leatherette - Composizione: 88% PVC, 12% PL - Peso 430 g/m<sup>2</sup> - Resistenza all'abrasione >100.000 cicli (test Martindale)



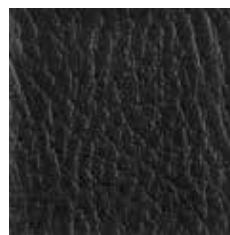
350 Blu



351 Rosso



353 Beige



355 Nero



359 Marron



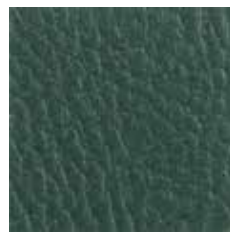
360 Grigio



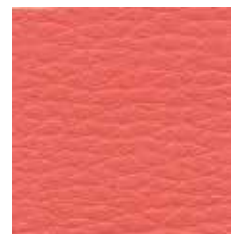
361 Crema



362 Azzurro



375 Verde



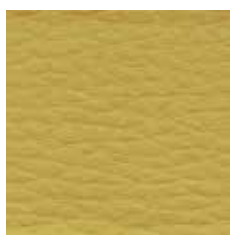
378 Salmone



379 Violetta



380 Giallo



381 Senape



382 Fucsia



383 Verdino



384 Grigio



385 Tortora



386 Viola



388 Testa di moro



389 Indaco

## CAT. 3 - URBAN

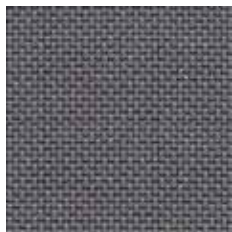


Tessuto ignifugo (UK) BS 5852 -

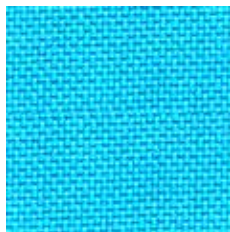
Composizione: 100% PL - Peso 280 g/m<sup>2</sup> - Resistenza all'abrasione >100.000 cicli (test Martindale) - Test: EN1021 - BS5852



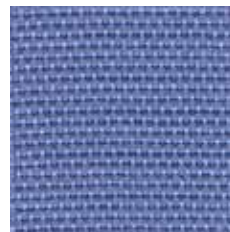
320 Nero



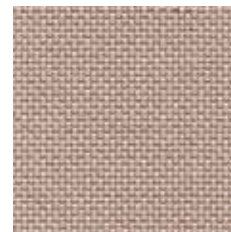
321 Grigio



322 Azzurro



323 Blu



324 Sabbia



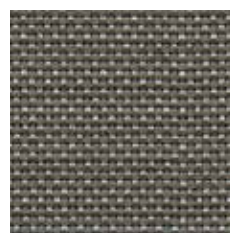
325 Mattone



326 Rosso



327 Marron



328 Grigio



329 Beige



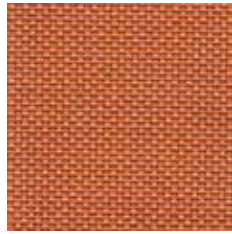
## CAT. 3 - URBAN

Tessuto ignifugo (UK) BS 5852 -

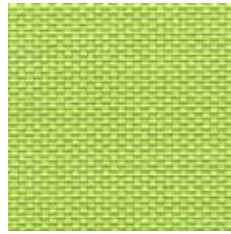
Composizione: 100% PL - Peso 280 g/m<sup>2</sup> - Resistenza all'abrasione >100.000 cicli (test Martindale) - Test: EN1021 - BS5852



330 Verde



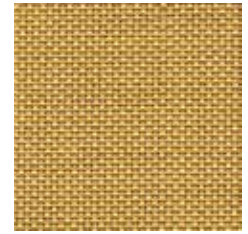
331 Arancio



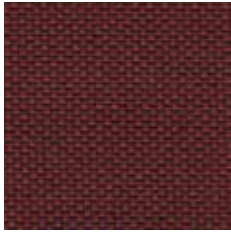
332 Verde



333 Verde



334 Giallo



335 Bordeaux



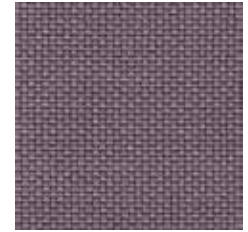
336 Marron



337 Testa di moro



338 Blu



339 Lilla



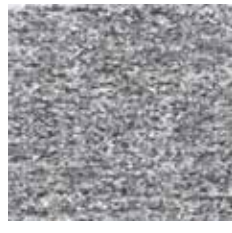
**Idrorepellente**  
**Water repellent**

## CAT. 4 - RAIN

Tessuto irrestringibile, smacchiabile/shrinkproof, removable stains - Composizione: 100% PL - peso 450 g/m<sup>2</sup> - Rest. all'abrasione >40.000 cicli (t.Martindale)



400 Panna



401 Grigio chiaro



402 Ghiaccio



403 Grigio fumo



404 Nero



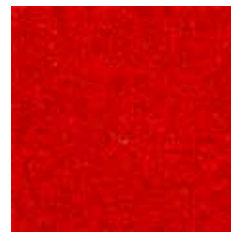
405 Marron



406 Beige sabbia



407 Arancio



408 Rosso



409 Fucsia



410 Viola



411 Verde



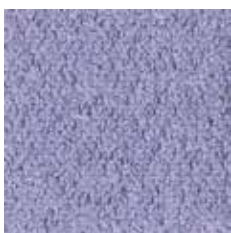
412 Antracite



413 Giallo



414 Rosso



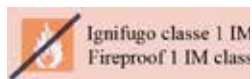
415 Lilla



416 Blu



## CAT. 4 - KING



Tessuto ignifugo classe 1IM - Composizione: 100% PL Trevira CS - Peso 290 g/m<sup>2</sup> - Resistenza all'abrasione >100.000 cicli (test Martindale). Test: C1 - 1IM - EN1021.1 - EN1021.1-2 - CRIB5 - IMO - AM18 - BS 7176



417 Bordeaux



418 Grigio scuro



419 Grigio chiaro



420 Azzurro



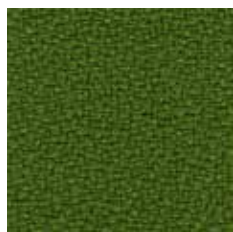
421 Acquamarina



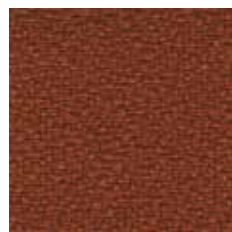
423 Fucsia



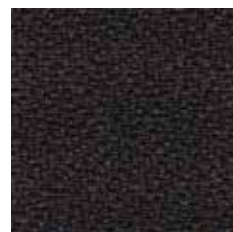
427 Rosso



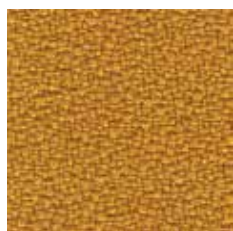
428 Verde



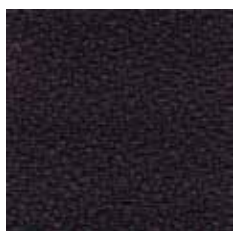
429 Mattone



430 Testa di moro



431 Ocra



432 Viola



433 Nero



434 Blu



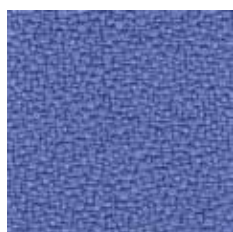
436 Verde



437 Verde scuro



438 Navy



439 Azzurro



440 Arancio



471 Blu

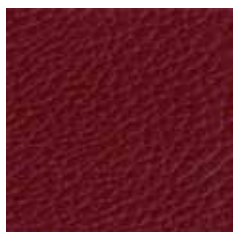
## CAT. 4 - ECOPELLE IGNIFUGA



Ecopelle ignifuga / *fireproof leatherette*; test: 1 IM, BS 5852, EN 1021  
Composizione: 85% PVC, 14% PES, 1% PU - Peso 550 g/m<sup>2</sup> - Resistenza all'abrasione >100.000 cicli (test Martindale)



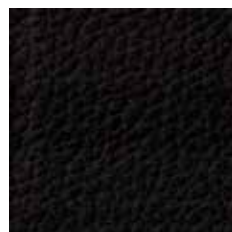
484 Grigio chiaro



485 Bordeaux



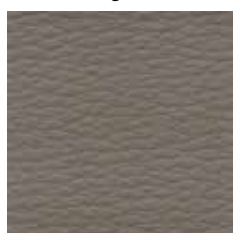
486 Arancio



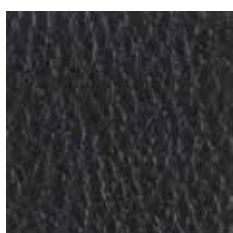
487 Testa di moro



488 Crema



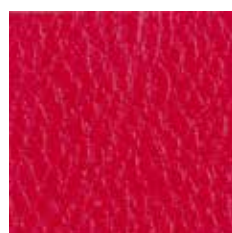
489 Grigio tortora



490 Nero



491 Bianco



492 Rosso



493 Blu

## CAT. 4 - ECOPELLE IGNIFUGA



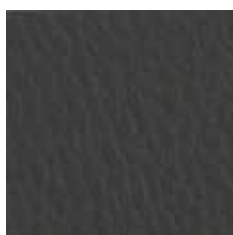
Ignifugo classe 1 IM  
Fireproof 1 IM class

Ecopelle ignifuga / *fireproof leatherette*; test: 1 IM, BS 5852, EN 1021

Composizione: 85% PVC, 14% PES, 1% PU - Peso 550 g/m<sup>2</sup> - Resistenza all'abrasione >100.000 cicli (test Martindale)



494 Marron



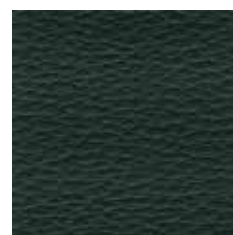
495 Grigio scuro



496 Beige



497 Azzurro



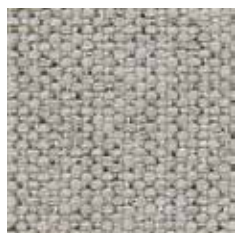
498 Verde



499 Verde chiaro

## CAT. 4 - SOFT

Tessuto / *fabric* - Composizione: 100% PL - Peso 653 g/m<sup>2</sup> - Resistenza all'abrasione >90.000 cicli (test Martindale)



454 Grigio chiaro



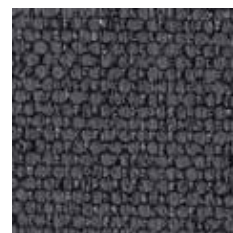
455 Azzurro



456 grigio



457 Blu



458 Grigio antracite



459 Nero



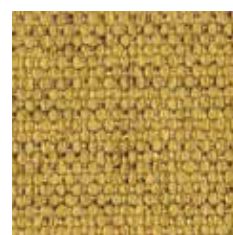
460 Marron



461 Rosa



462 Grigio



463 Giallo



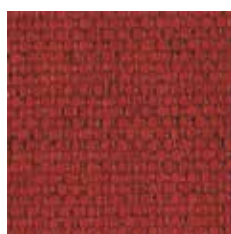
464 Rosa



465 Moka



466 Cioccolata



467 Rosso



468 Lime



469 Verde



470 Grigio



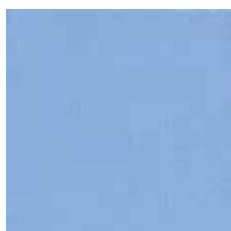
## CAT. 5 - PELLE NERA

500 Pelle nera

## CAT. 6 - IRON



Ecopelle ignifuga/*fireproof leatherette* classe 1IM - Composizione: 88% PVC, 7% PL, 4% CO, 1% PU - Peso 715 g/m<sup>2</sup> - Resistenza all'abrasione >200.000 cicli (test Martindale) - Resistenza alle flessioni > 100.00 cicli - Test: 1IM - EN1021 - BS5852 - Anallergico, antimicotico, atossico, antibatterico, resistente ai graffi e all'indaco dei jeans-



620 Azzurro



621 Lilla



622 Rosa



623 Rosso



624 Verde



625 Verde



626 Arancio



627 Crema



628 Marron



629 Grigio chiaro



630 Grigio scuro



631 Testa di moro



632 Celeste



633 Navy



634 Blu



635 Malva



636 Verde



637 Giallo senape



638 Grigio tortora



639 Nero



## CAT. TESSUTO RETE

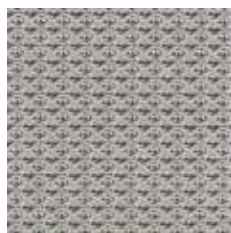
Tessuto autoportante Extra Rete -  
Composizione: 100% PL - Peso: 530 g/m<sup>2</sup> - Resistenza all'abrasione: >30.00 cicli



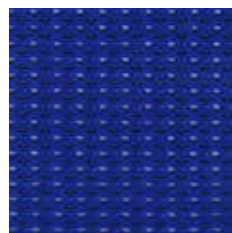
R01 Rete nera



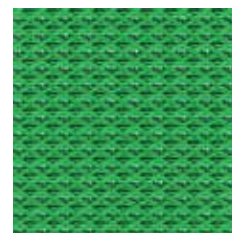
R02 Rete bianca



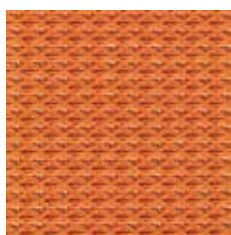
R03 Rete grigia



R04 Rete Blu



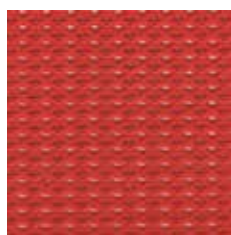
R05 rete verde



R06 Rete arancio



R07 Rete antracite

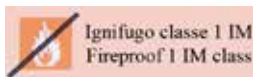


R08 Rete rossa



R09 Rete beige

## CAT. TESSUTO RETE IGNIFUGA



Ignifugo classe 1 IM  
Fireproof 1 IM class

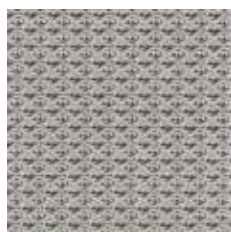
Tessuto autoportante Extra Rete ignifugo / fireproof classe 1 IM  
Composizione: 100% PL - Peso: 530 g/m<sup>2</sup> - Resistenza all'abrasione: >30.00 cicli - test: UNI 9177 classe 1



R01 Rete nera



R02 Rete bianca



R03 Rete grigia